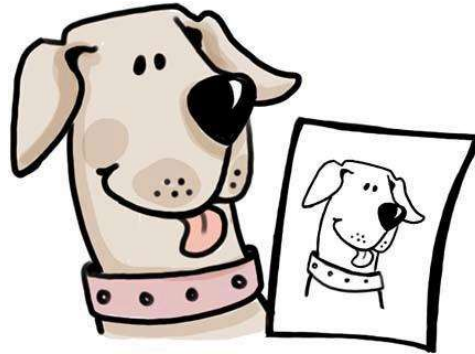


2025 New Jersey State 4-H K-9 Arts Show

in conjunction with the
NJ 4-H Dog Show, Saturday, June 14th, 2025



The K-9 Arts Show recognizes the creativity of 4-Hers, providing an outlet for them to showcase their talents, receive feedback from judges, and recognition from the community. Life skills developed through the arts include, among others, communication, decision making, self-esteem, leadership, goal setting, socialization and responsible citizenship.

The K-9 Arts Show is open to any 4-H club members (grades 4th and up). A 4-Her does NOT need to be registered in a 4-H dog club or arts related club to enter the K-9 Arts Show.

All entries must relate to a dog theme. All entries must be original works only (no kits).

Scoring will follow the Danish system. Ribbons will be awarded for first through third place in each class in the following divisions - 4th-6th grade, 7th -9th grade and 10th-13th grade.

Pre-registration is required online. Link available at <https://tinyurl.com/3jnfrz8m>

All entries should be brought to the State 4-H Dog Show at:
Ted Blum 4-H Center
310 Milltown Rd
Bridgewater, NJ

Judged work will be available for public viewing throughout the day. Judges will be available to share their feedback with 4-Hers who have entered the New Jersey 4-H K-9 Arts Show.

CATEGORIES AND CLASSES

**The NJ 4-H K-9 Art Show is divided into the following categories:
Photography | Creative Writing | Visual Art | Craft**

Photography Classes:

- A. Developed and printed professionally or developed and printed by member, and
- B. If it was shot as a digital or 35 mm film photograph.

Photos may be cropped. If any other adjustments were made (color, brightness, contrast, retouch etc.), include an original photo marked "original" when piece is submitted.

Creative Writing Classes:

- Essay
- Short Story
- Children's Story
- Poem
- One Act Play
- Comic Strip
- Other

Visual Art Classes:

Visual arts can be 2 or 3 dimensional. A 2D piece occupies a flat space. A 3D piece occupies more space and is usually in the form of a sculpture or other structure created from hard materials. All 2D pieces must be mounted for display before being entered (matted or framed).

- Pencil Sketch
- Oil Paint
- Water Color
- Charcoal
- Chalk/Pastel
- Ink
- Acrylic
- Oil Pastel
- Computer
- Crayon
- Colored Pencil
- Collage
- Print
- Etching
- Art made from recycled materials
- Art made from natural materials
- Sculpture
- Other

Craft Classes:

- Weaving
- Candle
- Leatherwork
- Pottery
- Puppet
- Bead
- Jewelry
- Costume/Apparel
- Mask
- Fiber Arts
- Woodwork
- Doll/Stuffed Animal
- Other