

## Civilian Marksmanship Program

Camp Perry Training Site - Building 3

P.O. Box 576

Port Clinton, OH 43452

(419) 635-2141

### Target Stand Pictures



Front



Rear



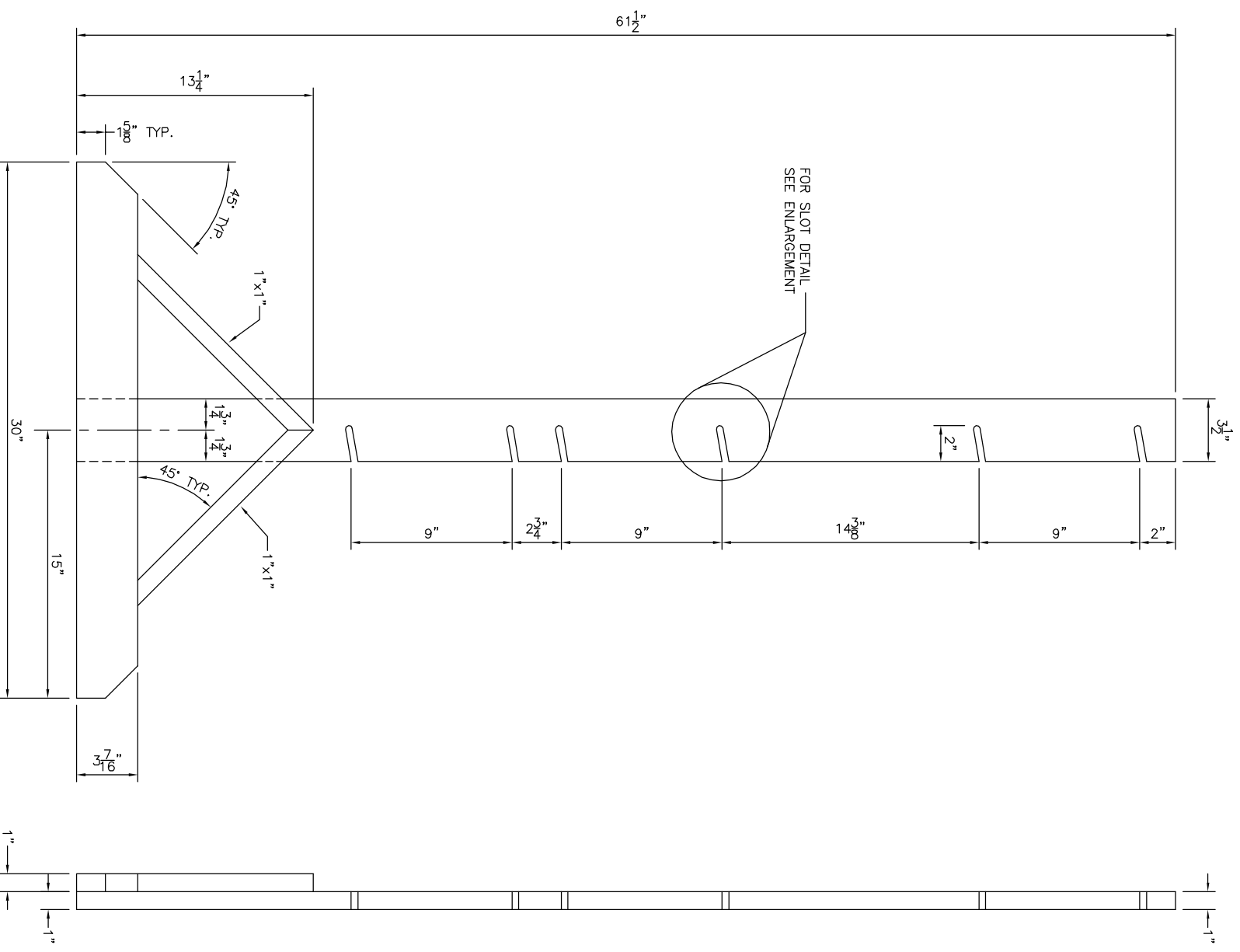
Target Box View 1



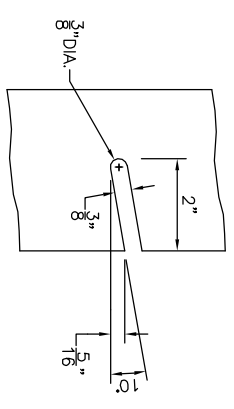
Target Box View 2



Target Box View 3



LEFT LEG  
SCALE: 3"=1'-0"



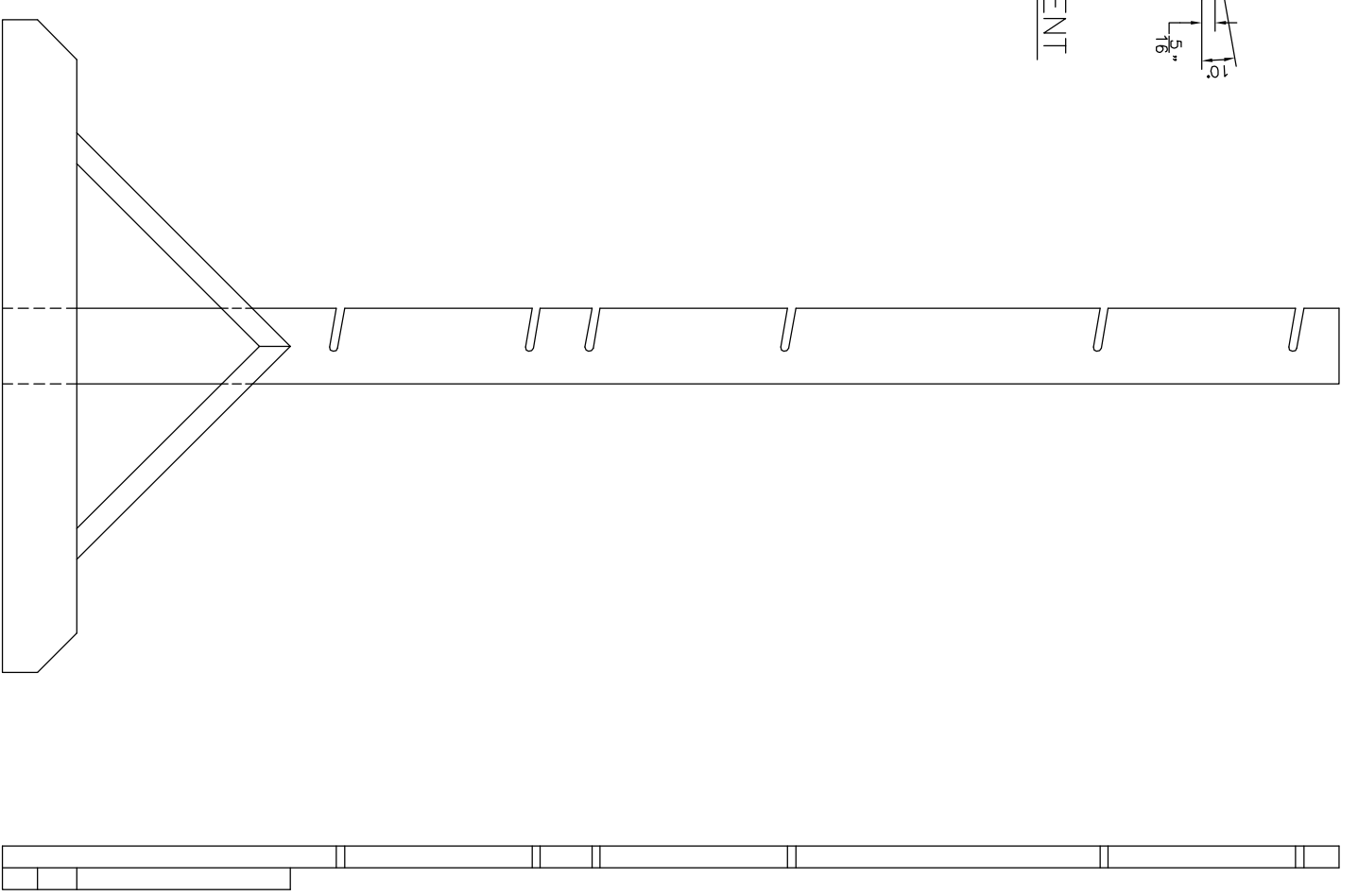
SLOT ENLARGEMENT  
SCALE: HALF

NOTE:  
DIMENSIONS SHOWN ARE TYPICAL ON BOTH LEGS (RIGHT LEG IS ON OPPOSITE HAND)

BILL OF MATERIAL LEG ASSEMBLY	
(2)	1" x 3 1/2" x 61 1/2"
(2)	1" x 3 7/16" x 30"
(4)	1" x 1" x 18 3/4"

NOTE:  
FOR LASTING RESULTS  
USE #1 GRADE LUMBER.

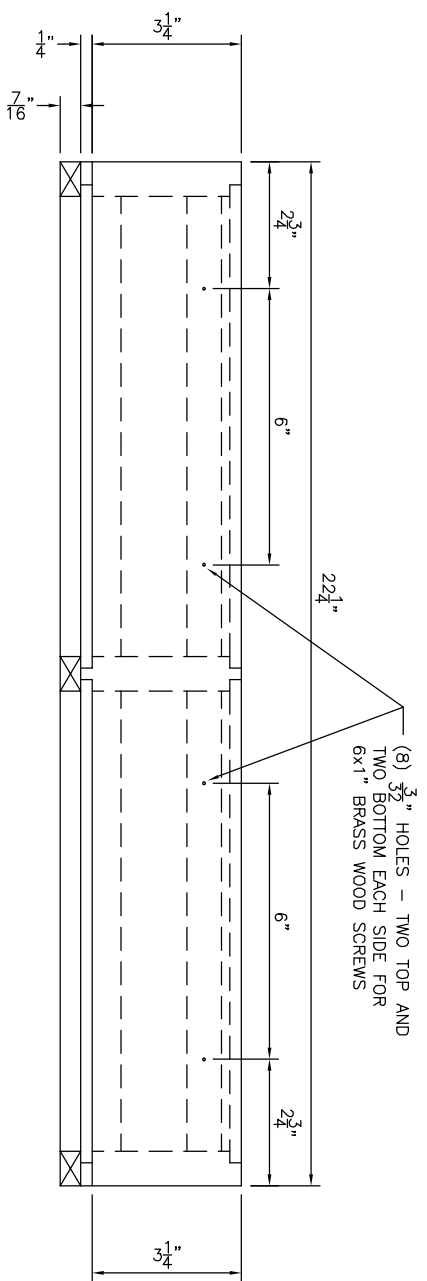
NOTE:  
FOR TARGET BOX ASSEMBLY  
SEE SHEET 1 OF 2



RIGHT LEG  
SCALE: 3"=1'-0"

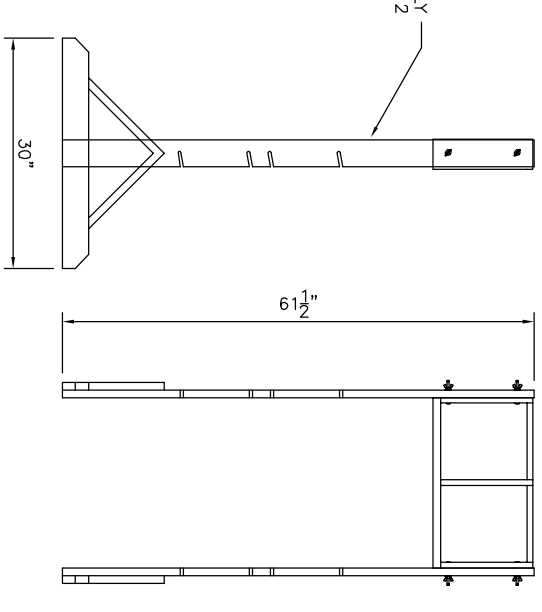
# LEG ASSEMBLY

AIR RIFLE TARGET STAND		SCALE AS SHOWN	DATE
LEG ASSEMBLY		SHEET 2 OF 2	DATE: 12/12/2004
CIVILIAN MARKSMANSHIP PROGRAM		MATERIAL: WOOD	JOB NO. CMP-1
PORT CLINTON, OHIO 43452		Daniel B. Torfs, Sr. d.b.a.	524 Jefferson Street • Port Clinton, OH 43452
DTS Drafting Services		phone (419) 341-2921	e-mail: dts@delphiho.net



TOP VIEW

(8)  $\frac{3}{2}$ " HOLES - TWO TOP AND TWO BOTTOM EACH SIDE FOR 6x1" BRASS WOOD SCREWS



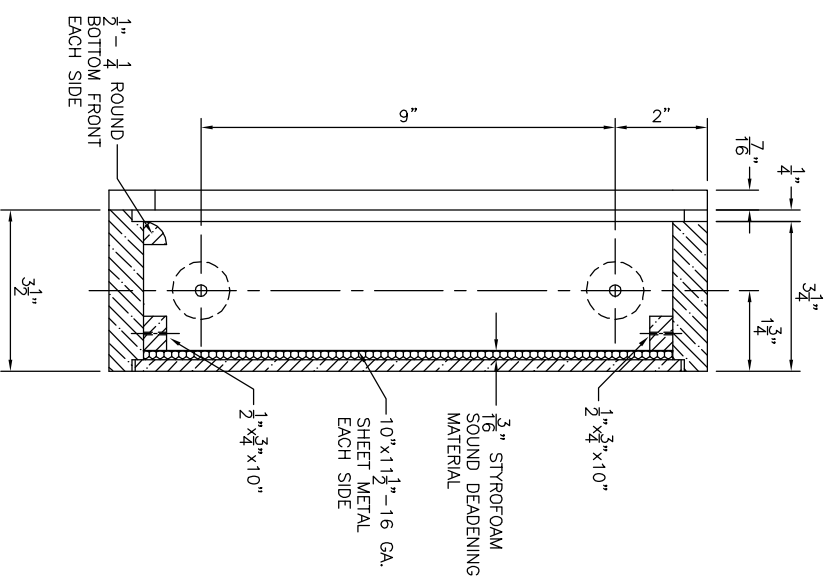
FOR LEG ASSEMBLY SEE SHEET 2 OF 2

LEFT SIDE

FRONT VIEW

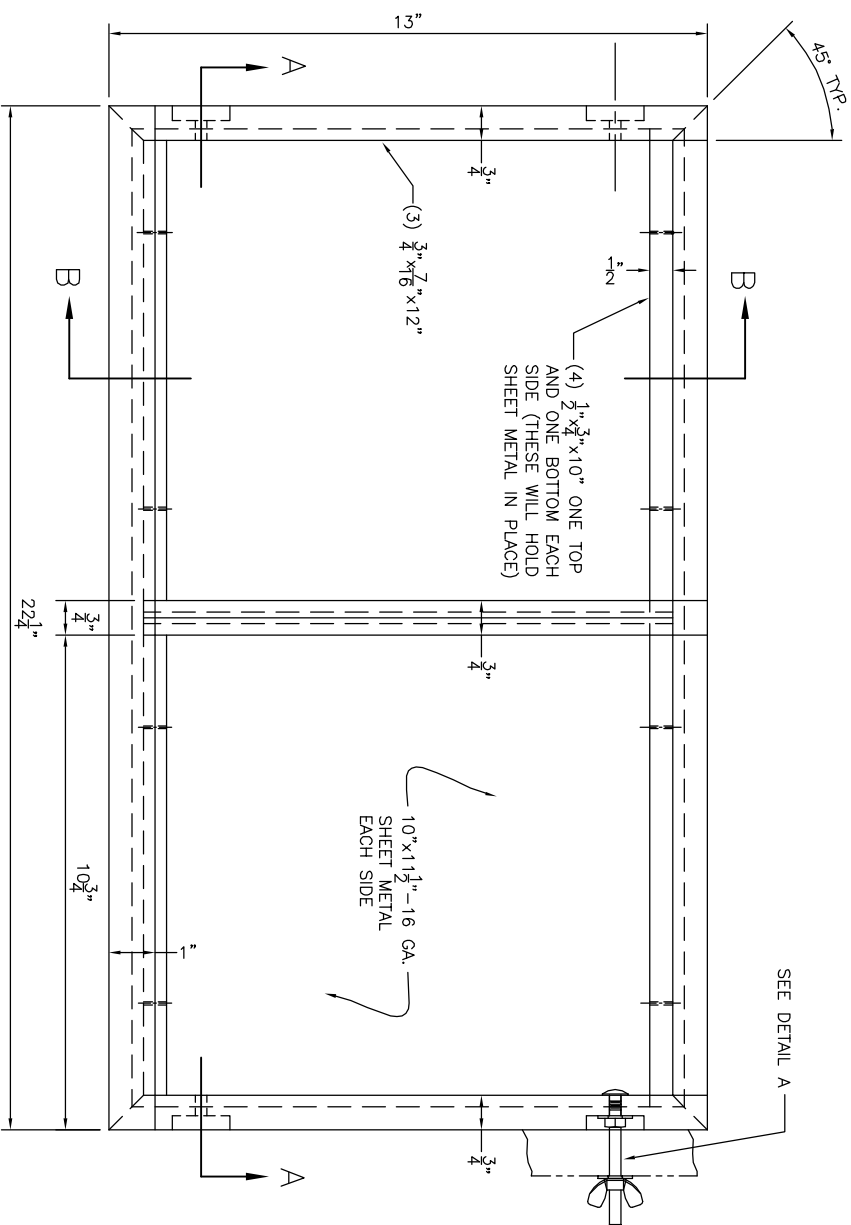
TARGET STAND ASSEMBLED

SCALE: 1"=1'-0"



SECTION B-B

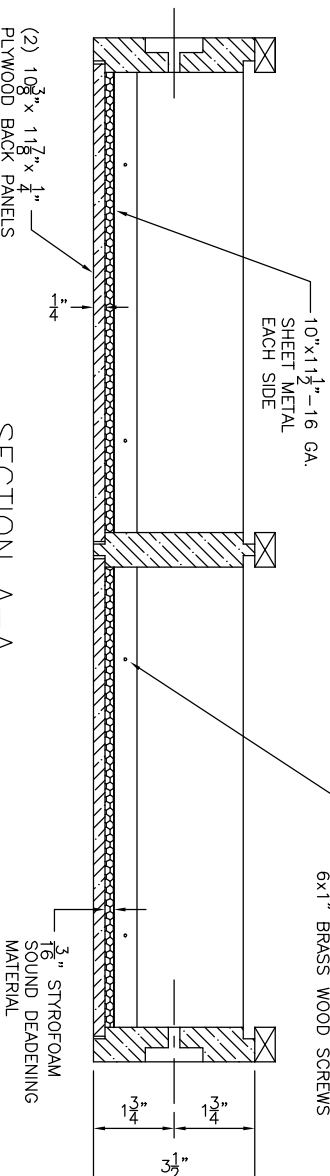
SCALE: HALF



FRONT VIEW

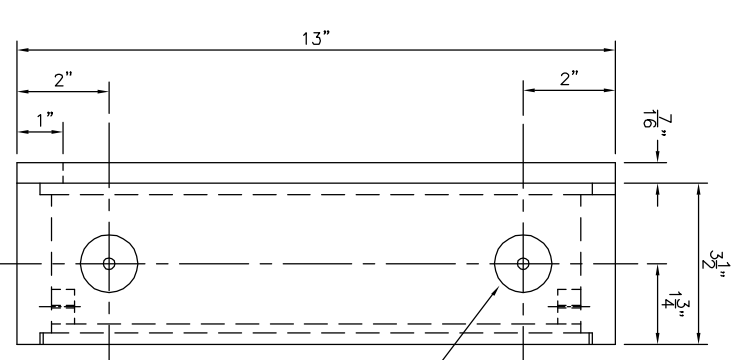
TARGET BOX

SCALE: HALF

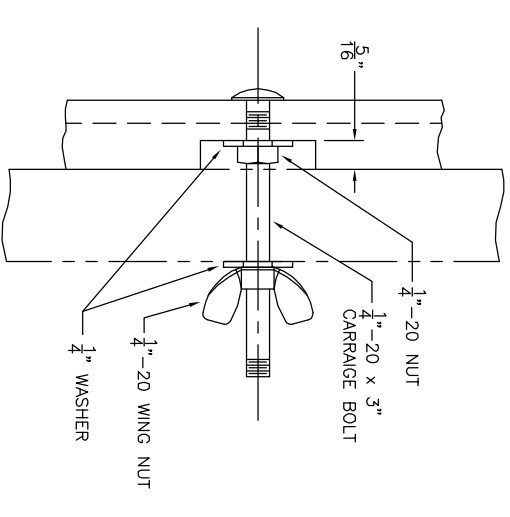


SECTION A-A

SCALE: HALF



SIDE VIEW



DETAIL A

SCALE: FULL

BILL OF MATERIAL	
TARGET BOX ASSEMBLY	
MAIN FRAME	
(2)	3/4" x 3 1/2" x 22 1/4" TOP & BOTTOM
(2)	3/4" x 3 1/2" x 13" LEFT & RIGHT
(1)	3/4" x 3 1/2" x 11 1/2" MIDDLE
(4)	1/2" x 3/4" x 10"
(2)	1/2" - 1/4" ROUND x 10"
(3)	3/4" x 7/16" x 12"
(1)	1" x 7/16" x 22 1/2"
(2)	10 3/8" x 11 7/8" x 1/4" PLYWOOD BACK PANELS
(2)	10" x 11 1/2" - 16 GA. SHEET METAL
(2)	10 1/2" x 12" x 3/16" STYROFOAM SOUND DEADENING MATERIAL, THIS WILL HAVE TO BE TRIMMED
HARDWARE	
(8)	#6 x 1" BRASS WOOD SCREWS
(4)	1/4" - 20 x 3" CARRIAGE BOLT
(4)	1/4" - 20 NUT
(8)	1/4" WASHER
(4)	1/4" - 20 WING NUT

NOTE:  
FOR LASTING RESULTS USE #1 GRADE LUMBER AND STAINLESS STEEL HARDWARE.

AIR RIFLE TARGET STAND  
**TARGET BOX ASSEMBLY**

CIVILIAN MARKSMANSHIP PROGRAM  
200 BOX 376  
PORT CLINTON, OHIO 43452

SCALE AS SHOWN	PAWN BY	REVISION	DATE
SHEET 1 OF 2	D. TORIS		
MATERIAL: WOOD	DATE: 12/12/2004		
	JOB NO. GMF-1		

Daniel B. Toris, Sr. d.b.a.  
DTS Drafting Services  
524 Jefferson Street • Port Clinton, OH 43452  
Phone (419) 341-2921 • e-mail: dts@delphi.net